



OC Natives (Requiring little to no watering)

Trees/Tree-like Shrubs

- Oaks, such as Coast Live Oak (*Quercus agrifolia*) or Engelmann Oak (*Quercus engelmannii*)
- Southern California Black Walnut (*Juglans californica*)
- Goodding's Black Willow (*Salix gooddingii*)
- Cottonwood (*Populus fremontii*)
- Toyon (*Heteromeles arbutifolia*)
- Elderberry (*Sambucus nigra*)

Shrubs/Bushes

- Ceanothus, such as Hoaryleaf Ceanothus (*Ceanothus crassifolius*) or Woollyleaf Ceanothus (*Ceanothus tomentosus*)
- Sugar Bush (*Rhus ovata*)
- Lemonade Berry (*Rhus integrifolia*)
- Hollyleaf Redberry (*Rhamnus ilicifolia*)
- Laurel Sumac (*Malosma laurina*)
- Western False Indigo (*Amorpha fruticosa*)



Perennials/Wildflowers

- Matilija Poppy (*Romneya coulteri*)
- California Wildrose (*Rosa californica*)
- California Buckwheat (*Eriogonum fasciculatum*)
- White sage (*Salvia apiana*)
- Black sage (*Salvia mellifera*)
- Cleveland sage (*Salvia clevelandii*)
- Bladderpod (*Peritoma arborea*)
- Bush Sunflower (*Encelia californica*)
- Chaparral Mallow (*Malacothamnus fasciculatus*)
- California Sagebrush (*Artemisia californica*)
- Gooseberry (*Ribes speciosum*)
- Sticky Monkey Flower (*Mimulus aurantiacus*)
- Woolly Bluecurls (*Trichostema lanatum*)
- Fuchsia (*Epilobium canum*)
- Golden Yarrow (*Eriophyllum confertiflorum*)
- Common Yarrow (*Achillea millefolium*)
- Showy Penstemon (*Penstemon spectabilis*) or Foothill Penstemon (*Penstemon heterophyllus*)
- Narrow Leaf Milkweed (*Asclepias fascicularis*)
- Common Tidy Tips (*Layia platyglossa*)
- Blue-Eyed Grass (*Sisyrinchium bellum*)

Ground Covers

- Clustered Field Sedge (*Carex praegracilis*)
- Common Rush (*Juncus patens*)
- Purple Needlegrass (*Stipa pulchra*)
- Deergrass (*Muhlenbergia rigens*)
- California Aster (*Corethrogyne filaginifolia*)
- Wishbone Bush (*Mirabilis laevis*)
- Yerba Mansa (*Anemopsis californica*)

Vines

- Virgin's Bower (*Clematis ligusticifolia*)
- Southern Honeysuckle (*Lonicera subspicata*)
- Morning Glory (*Calystegia macrostegia*)



All Images provided courtesy of Nadiya Balukh



Inspiration

Here are some designs to inspire you as you consider transforming your garden with OC Natives.

These diagrams and ideas are provided courtesy of California Native Plant Society. Be sure to visit its site, **"Bloom! California,"** for more information and helpful tips!

Welcoming Entries



What You'll Need:

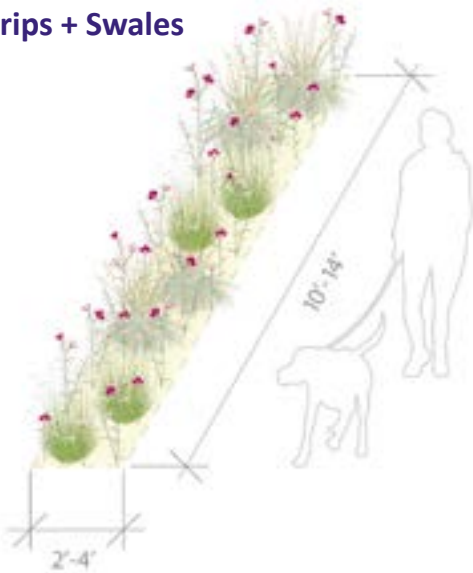
- Purple Clarkia (seed)
- 8-12 Douglas Iris
- 8-12 TOTAL PLANTS**



What You'll Need:

- | | |
|-------------------------|----------------------------|
| Common Manzanita | 10-20 Coyote Mint |
| 1 White Sage | 20-35 Blue Grama |
| 3 Deergrass | 20-60 Common Yarrow |
| 10-15 California Fescue | 75-125 TOTAL PLANTS |

Linear Strips + Swales



What You'll Need:

- | | |
|-----------------------|--------------------------|
| Purple Clarkia (seed) | 4-6 California Fescue |
| 4-6 Blue Grama | 8-12 TOTAL PLANTS |

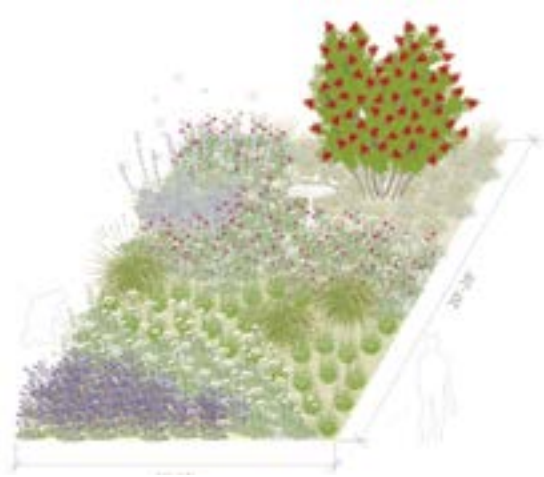


What You'll Need:

- Purple Clarkia (seed)
- 8-12 Douglas Iris
- 8-12 TOTAL PLANTS**



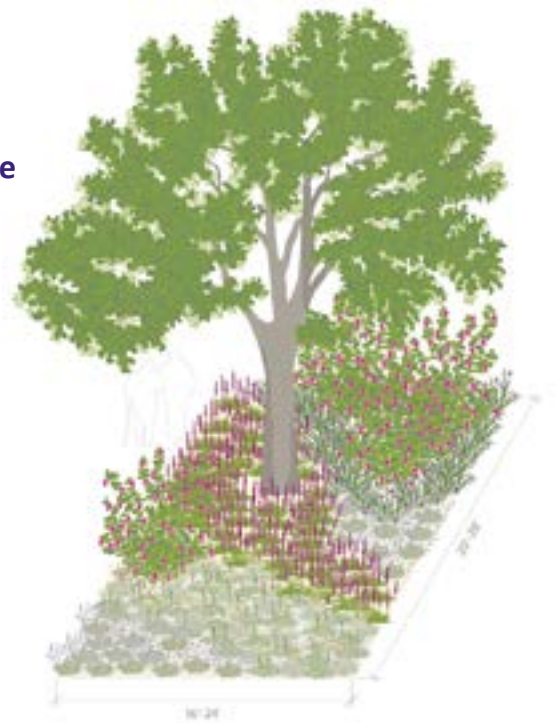
Sunny Pollinator Patch



What You'll Need:

- Purple Clarkia (seed)
- 1 White Sage
- 1 Toyon
- 3 Deergrass
- 10-20 Desertbells
- 15-25 Blue Grama
- 20-30 California Fescue
- 30-60 Common Yarrow
- 80-140 TOTAL PLANTS**

Shady Refuge



What You'll Need:

- 1 Valley Oak
- 3-4 Red Flowering Currant
- 10-20 California Fescue
- 15-25 Common Yarrow
- 15-25 Douglas Iris
- 15-25 Hummingbird Sage
- 15-25 Coyote Mint
- 75-125 TOTAL PLANTS**

Resources:

Bloom! California: For more inspiration and design tips www.bloomcalifornia.org/garden-inspiration

Calscape Garden Planner: An online tool for design ideas and a list of plants suitable to your location, style and goals. www.gardenplanner.calscape.org

Tree of Life Nursery: A nursery located in San Juan Capistrano dedicated to growing native plants. www.californianativeplants.com

California Native Plant Society: A top resource from California's native plant experts. www.cnps.org/gardening

Be Water Wise: Learn about MWD's rebate programs at www.bewaterwise.com and **download** a plant guide for Orange County at: www.bewaterwise.com/assets/mwd_plantguide-screen_oc_4_23.pdf

